

Time Management





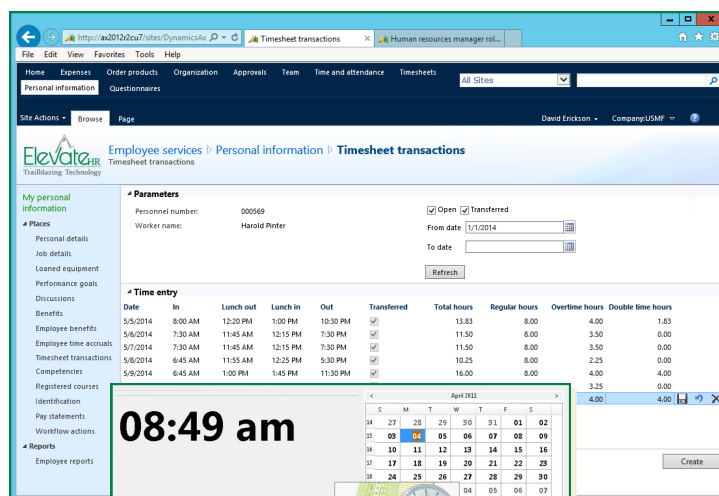
Time Management

- Leverage your investment in Microsoft Dynamics® AX and its Human Capital Management modules
- Improve the effectiveness of your Human Resources staff
- Increase the efficiency of your Human Resources operations and transaction processing
- Automate Human Resources Policies, Procedures, and Processes

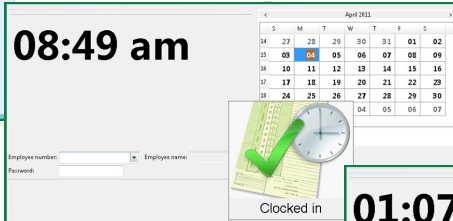
Elevate HR® for AX integrates with Microsoft Dynamics® AX to complete its Human Capital Management features

Elevate HR® Time Management modules add critically important components to the Human Capital Management suite of Dynamics® AX. Now you are in control of the clock! Allow your employees to clock-in and clock-out directly into Dynamics AX, and track paid time off (PTO) accruals and balances. Configure regular, over-time, and double-time rules, meal break and calendar options, rounding features, and more. Approve and validate time, and prepare journals to load to Payroll. Define PTO accrual rules and calculate balances. Empower your employees, through Self-Service, to know their PTO entitlement before putting through their next vacation request.

Microsoft Partner
Gold Enterprise Resource Planning

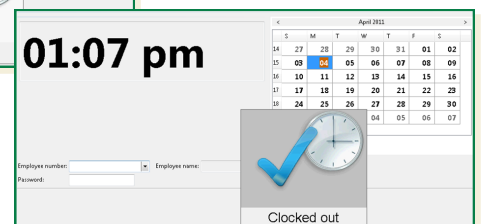



Parameters		Time entry	
Personnel number:	000569	Date	5/5/2014
Worker name:	Harold Pinter	In	8:00 AM
		Lunch out	12:20 PM
		Lunch in	1:00 PM
		Out	10:30 PM
		Transferred	<input checked="" type="checkbox"/>
		Total hours	13.83
		Regular hours	8.00
		Overtime hours	4.00
		Double time hours	1.83
		From date	1/1/2014
		To date	
		Refresh	



08:49 am

Clocked in



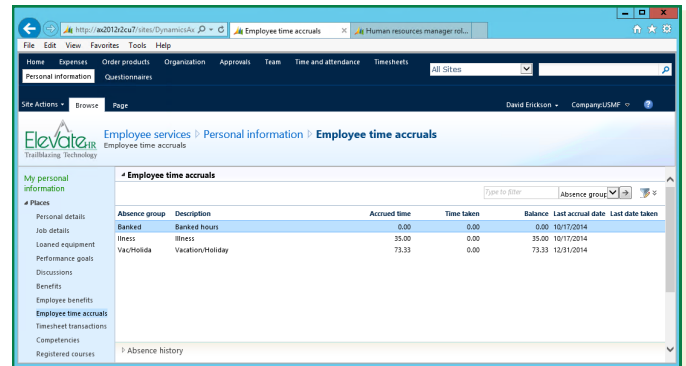
01:07 pm

Clocked out

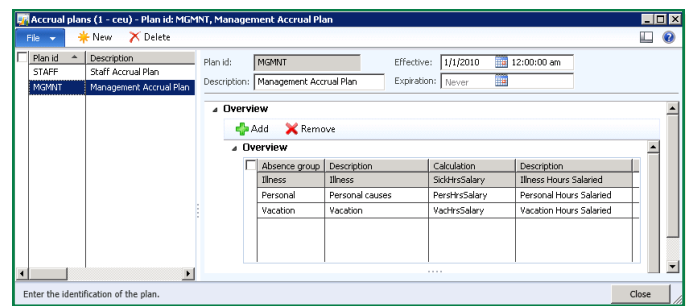
Time entry can come from Self-Service, terminal or POS clock-in clock-out, or clock devices such as card or biometric readers

Features

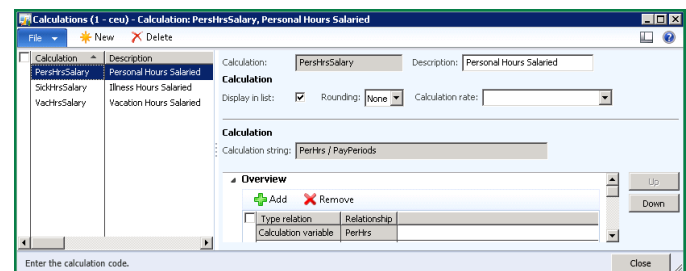
- Clock-in, clock-out graphic gives employees a simple way of recording time
- Optional direct entry through Employee Self-Service
- Time can be taken from any collection device, including biometric or card readers
- Definable regular, overtime and double-time calculations, pay periods, time rounding ranges, etc., can be customized with setup rules
- Time Clock Notices appear when each employee punches the clock
- Payroll interface configurations prepare time records for processing
- Accrual plan calculations of Paid Time Off (PTO) entitlements, such as vacation, personal, or sick time, for all employees
- Sophisticated PTO calculation engine creates employee accruals on an automatic or periodic basis
- Employee Self-Service highlights current PTO accruals, time-taken, and balances
- Integration with Dynamics AX absence request and tracking features



Employee Self-Service gives direct access to entitlements, time accruals, time taken, balances, and transaction history.



Accrual plans include absence groups available to a plan participant, and the defined calculation rules that are used to determine PTO accruals.



The Accrual calculation engine is highly configurable, providing a wide variety of options and algorithms, and allowing for service-based vacation benefits, among other features.

For more information about our products and services, visit www.elevate-hr.com

Email: info@elevate-hr.com

Phone: +1 973-917-3230

+1 877-968-4440