

Elevate HR™ Extensions for AX

Benefits Administration

Benefits

- Leverage your investment in Microsoft Dynamics® AX and its Human Capital Management modules
- Improve the effectiveness of your Human Resources staff
- Increase the efficiency of your Human Resources operations and transaction processing
- Automate Human Resources Policies, Procedures, and Processes

Explore our lineup of **Elevate HR™ Extensions for AX**, including:

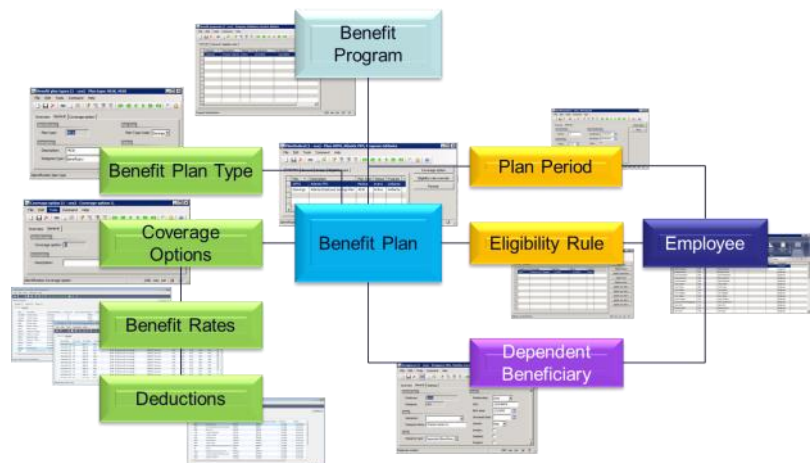
- **HR Wizards**
- **Time Management**
- **HR Workflow**
- **Federal Compliance Reporting with Health and Injury**
- **Disciplinary, Commendation**



www.elevate-hr.com

Elevate HR™ Extensions for AX integrate with Microsoft Dynamics® AX to complete its Human Capital Management features

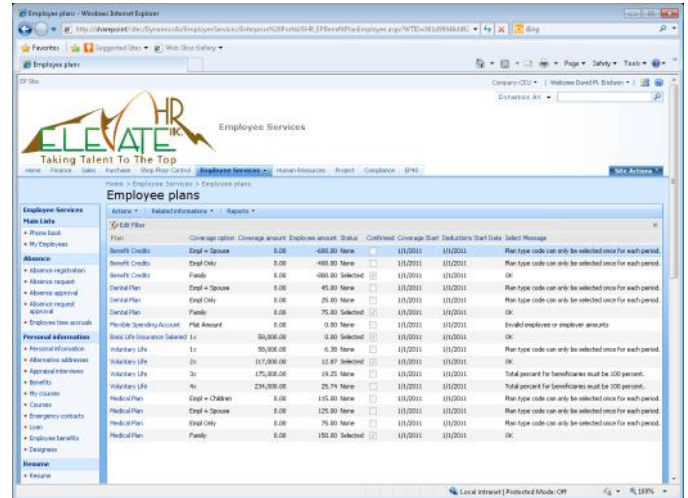
Manage employee benefits through our comprehensive, rules-driven module for Dynamics AX that provides automated open enrollment and life events processing (either through employee self-service or by HR administrators), configurable Flex Benefit plan management, extensive eligibility setups, complete benefit rate calculation, and payroll deduction processing.



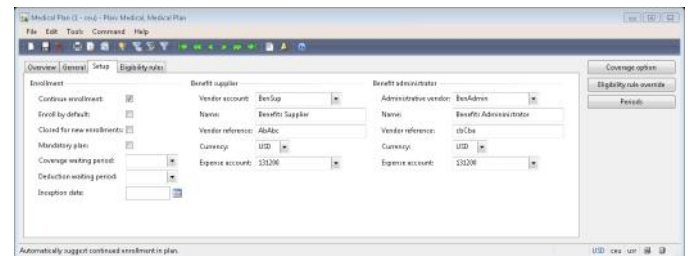
Rules for administering benefits are attached to the plans to control eligibility, coverage options, benefit rates, benefit plan status, processing methods, and other plan features. Plans can be grouped into Benefit Programs. Eligibility rules establish the set of benefits in which an employee can enroll. Dependents or Beneficiaries are attached and enrolled in plans for which they are eligible. The module includes Annual Enrollment for employee selection of benefit plans from their eligible options, payroll deduction mapping, and payroll file generation processes.

Features

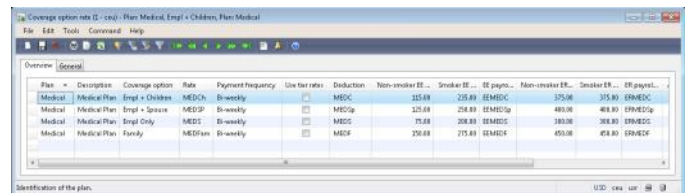
- Open Enrollment, Life Events, Dependent and Beneficiary processing provided to employees through self-service
- Benefit plan design includes processing rules, coverage options, eligibility rules, coverage and deduction waiting periods, and tracking of benefit providers and plan administrators
- Detailed benefit rate rules and calculation engine cover employee, employer, administrator, smoker/non-smoker, and age-based, salary-based, or employee-type-based rate tiers
- Coverage calculation includes dependent coverage options, life insurance and disability salary multiples
- Benefit credits offered from general amounts to employee/plan specific calculations
- Plan eligibility rules include criteria such as organization, employee type, location, state, zip code, job function, and five user-defined fields
- Benefit Groups ease eligibility definition and processing
- Grandfathering of eligibility enables continuation of legacy plans and plan enrollment
- Deduction processing for payroll



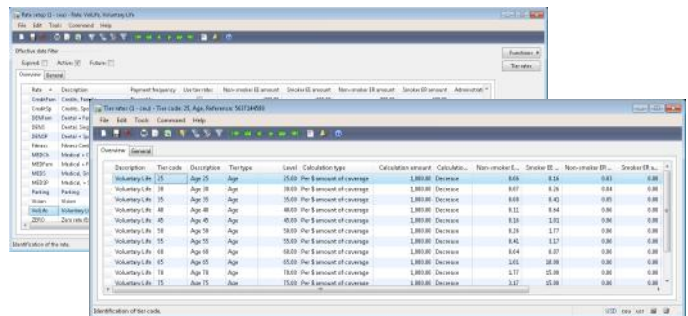
Employee Self-Service gives direct update access to benefits for open enrollment, life events, and dependent and beneficiary information.



Benefit Plans include design elements such as vendor information, processing rules, coverage options, eligibility rules, and grandfathering provisions.



Coverage options define choices for health and welfare, insurance, and defined benefit plans, linking to rate and deduction information.



Sophisticated rate calculation engine includes tiered rates for employee, employer, and administrator rate determination.

For more information about our products and services, visit www.elevate-hr.com

Email: info@elevate-hr.com
 Phone: +1 (973) 917-3230
 +1 (877) 968-4440

